

# Microsoft Office 2007: Essentials, Revised Edition



Lesson 2: Working with Windows Programs

[Return to the Office 2007 web page](#)



**LABYRINTH**  
LEARNING™

# Introducing Windows

- **Windows is your *operating system***
  - ▲ Manages the computer's RAM
  - ▲ Manages file storage
  - ▲ Manages programs
  - ▲ Manages hardware



# Windows Editions

- **Windows XP**

- ▲ Home
- ▲ Professional
- ▲ Media Center
- ▲ Tablet PC

- **Windows Vista**


- ▲ Home Basic
- ▲ Home Premium
- ▲ Business
- ▲ Ultimate



# Switching On the Computer

- Most computers have a power switch on the front of the system unit
- You may also need to switch on the monitor



TIP  *Turn on peripherals first.*



**LABYRINTH**  
LEARNING™

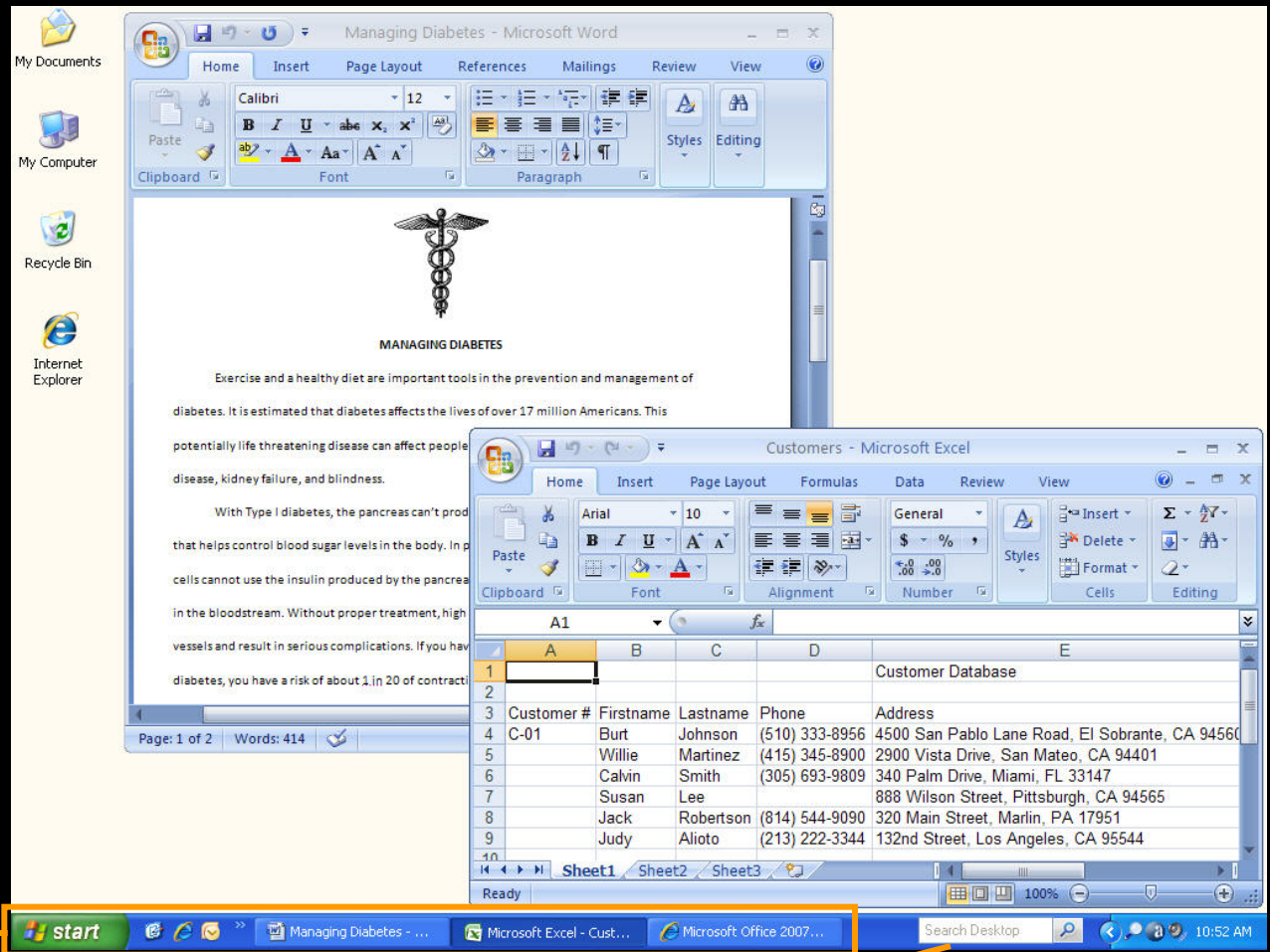
# Logging On to Windows

- Each user can have unique menus and programs
- Some Windows systems automatically log on a specific user, others display a Log On screen where you type a username and password



# The Windows XP Desktop

Displays icons to start programs or utilities, view folders and the Recycle Bin



Contains a taskbar and a Start button

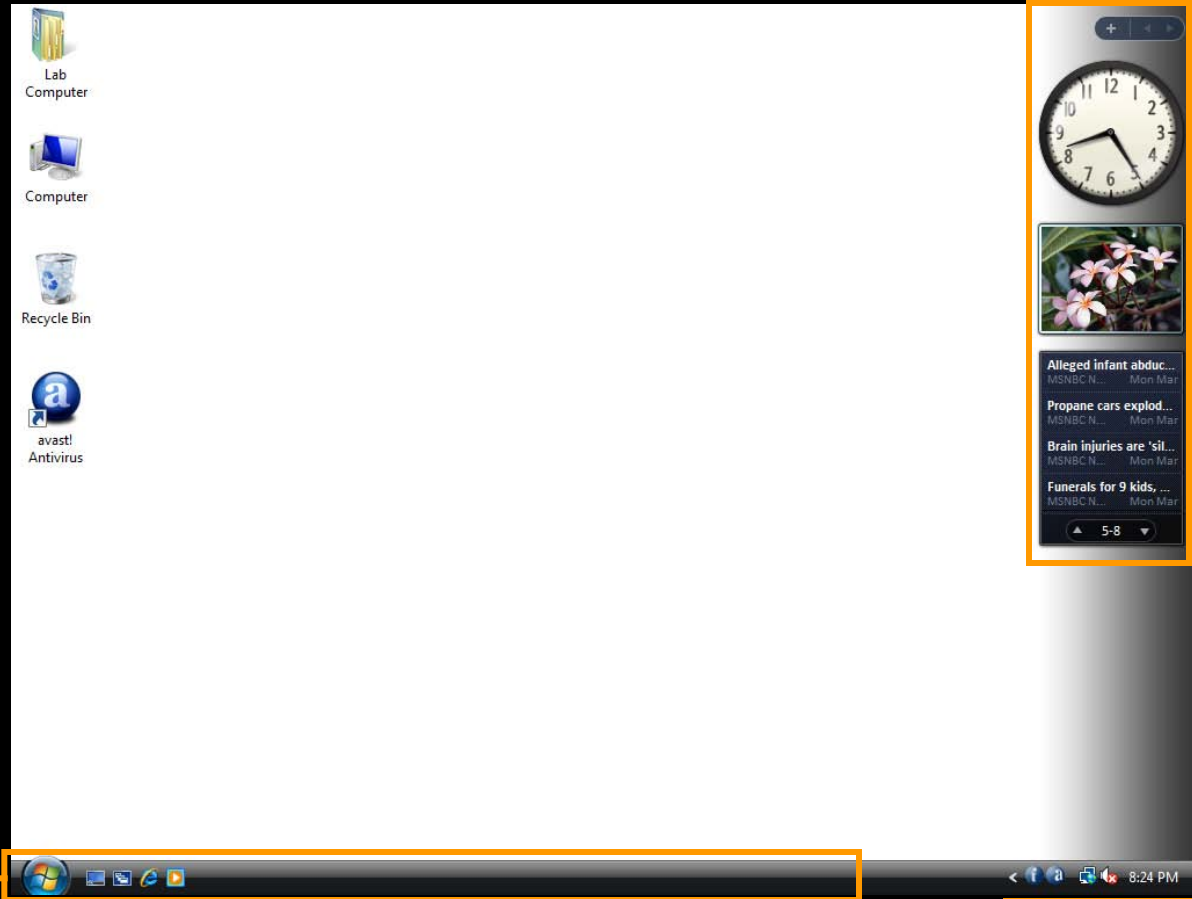
Desktop searches help you locate files

System tray and time



# The Windows Vista Desktop

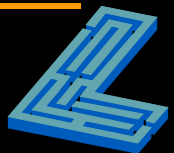
Displays icons to start programs or utilities, view folders and the Recycle Bin



Windows gadgets

Contains a taskbar and a Start button

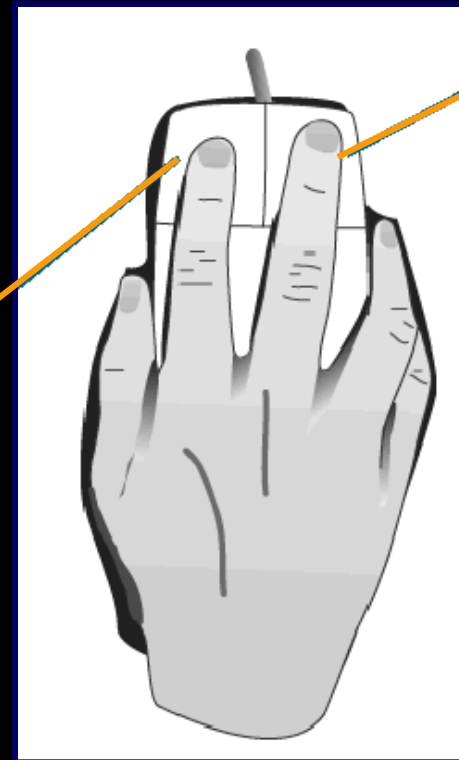
System tray and time



# Using a Mouse

## Primary Button:

The left mouse button is used most frequently; most commands are issued with this button



## Secondary Button:

The right, or secondary, mouse button brings up special pop-up menus





# Mouse Motions

Motion		Use it to...
Click		select an object or give a command
Double-Click		give many types of commands
Drag		move objects around on the screen
Right-Click		display a special quick menu
Point		display ToolTips and other pop-up items



# Pointing with the Mouse

- The *tip* of the arrow always shows where the mouse is pointing



Arrow tip too high



Arrow tip too low




Arrow tip pointed correctly



# Starting Programs

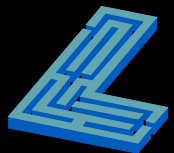
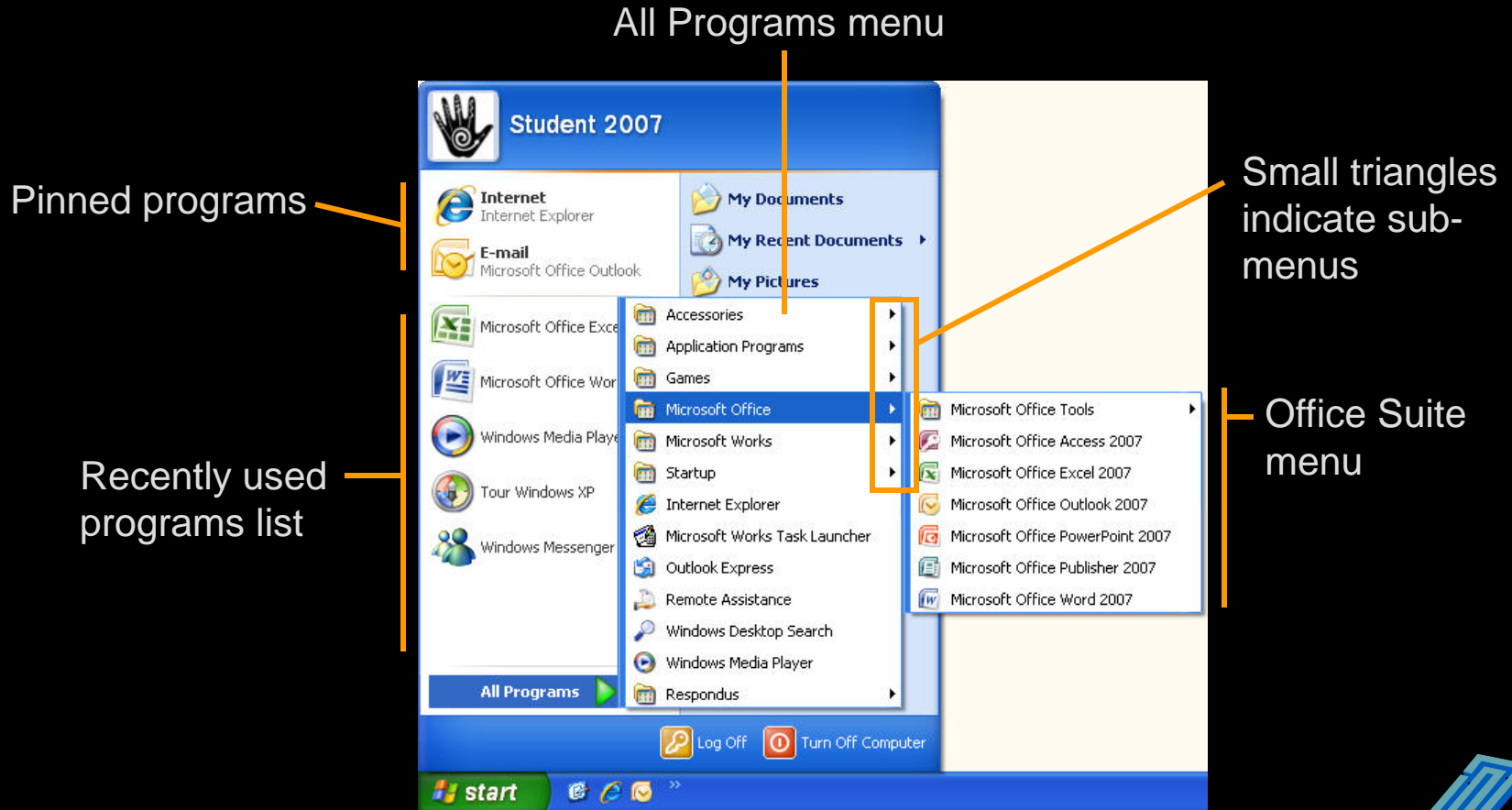
- The Start button gives you menus from which to start programs
- The *Quick Launch* toolbar allows you to start programs with a single mouse click



TIP  A *Quick Launch* toolbar may not be visible in Windows XP but you can switch it on in the *Taskbar properties* dialog box.



# Start Button Menu (Win XP)



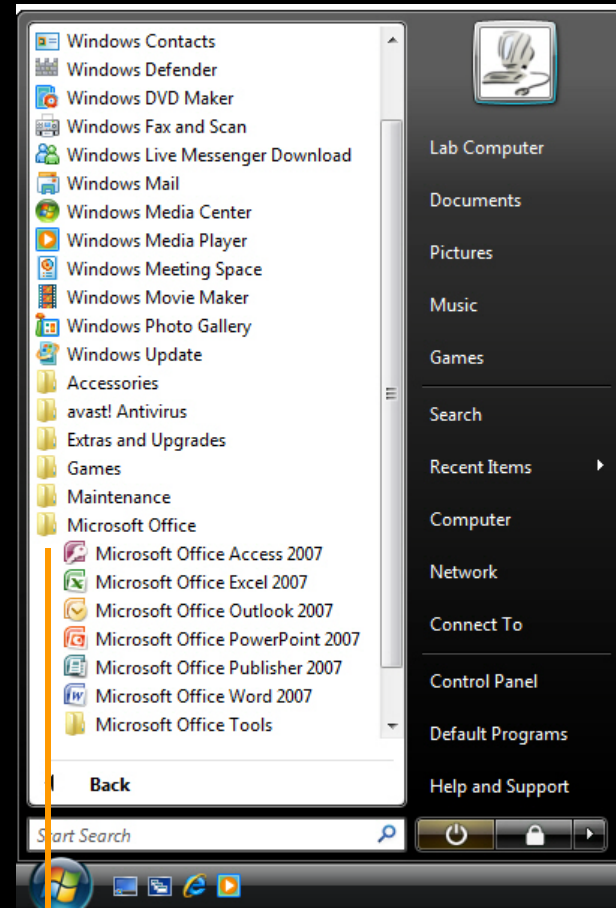
# Start Button Menus (Win Vista)

Pinned programs

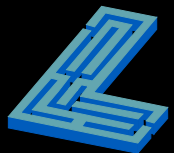
Recently used programs list



All Programs menu



Office Suite menu

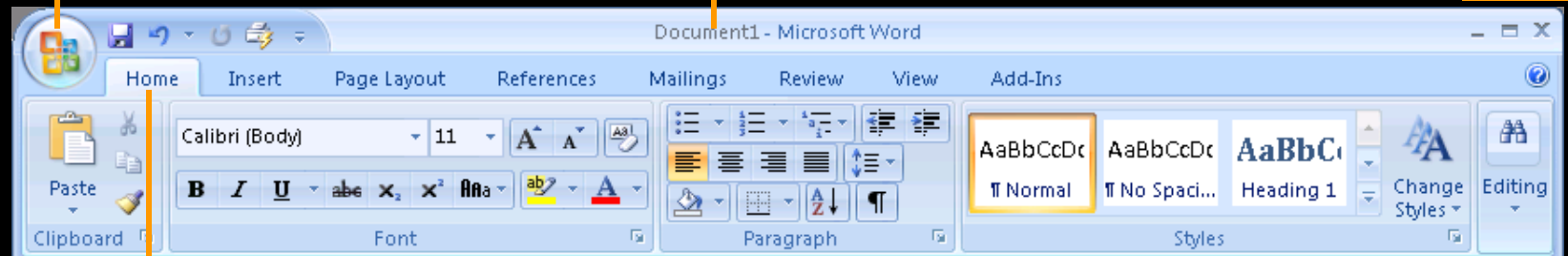


# Basic Parts of a Program Window

Office button

Title bar

Quick-sizing buttons



Ribbon

Ribbon tab

Command group

TIP



Many (but not all) Office 2007 programs replace the menu bar and toolbars with the Ribbon.

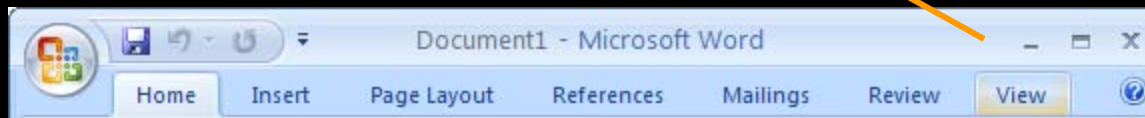


# Controlling Program Windows

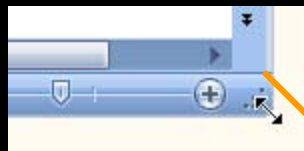
- **Window Modes**

- ▲ Maximized
- ▲ Restored
- ▲ Minimized

- **Moving a restored window**



- **Resizing a restored window**



- **Quick Sizing buttons**



*You can only move and resize restored (not maximized) windows.*



# Quick-Sizing Buttons



Minimize



Maximize



Restore



Close



Restore button appears when a window is maximized

Maximize button appears when a window is restored

Restore button reappears when a window is maximized again



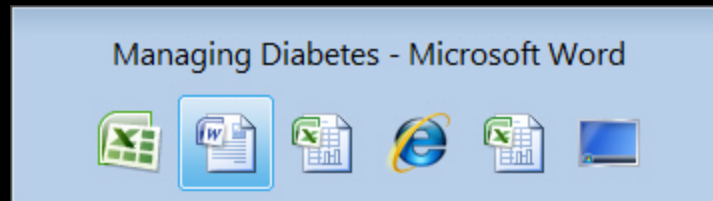


# Multitasking

- Running multiple programs lets you switch quickly and use the best program for each task



Each running program/document has its own button on the Windows taskbar



**TIP** Use **Alt + Tab** to switch quickly between program windows.



# Logging Off Windows

- Logging off leaves Windows ready for the next user to log on
- Windows XP allows you to switch between users without logging off
- Your logon name can give access to files and other resources you may wish to keep private

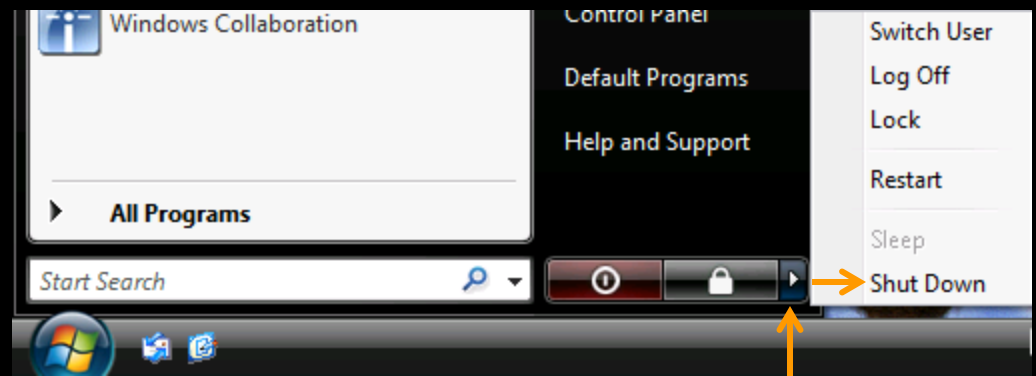


# Shutting Down Windows

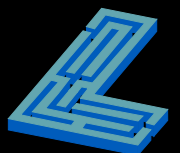
- If you want to turn off the computer, use the *shut down* command (not Log Off)
- It is important to shut down Windows properly before you turn off the computer



Win XP

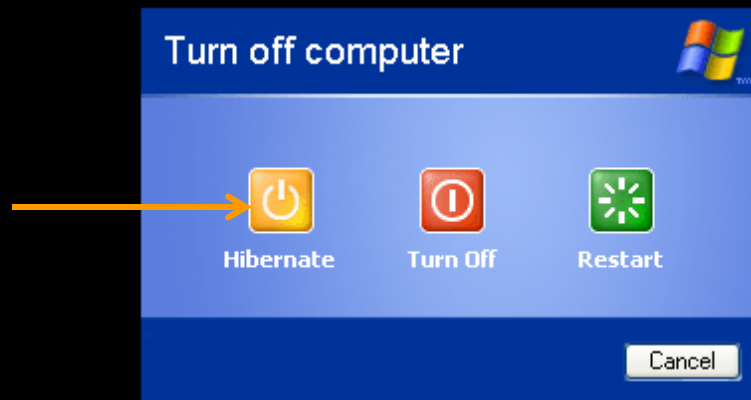


Win Vista

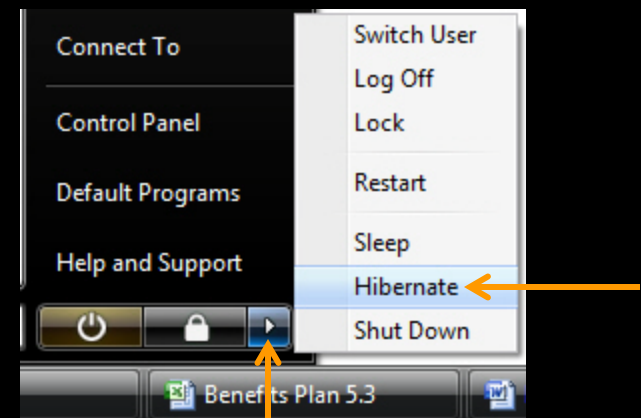


# Hibernation

- Available in Windows 2000 and XP
- Allows you to start Windows right where you left off
  - ▲ Hibernate—Shuts down the computer after saving details on all of your open windows to the hard drive



Win XP



Win Vista



# Microsoft Office 2007: Essentials, Revised Edition



## Lesson 2: Working with Windows Programs

[Return to the Office 2007 web page](#)



**LABYRINTH**  
LEARNING™